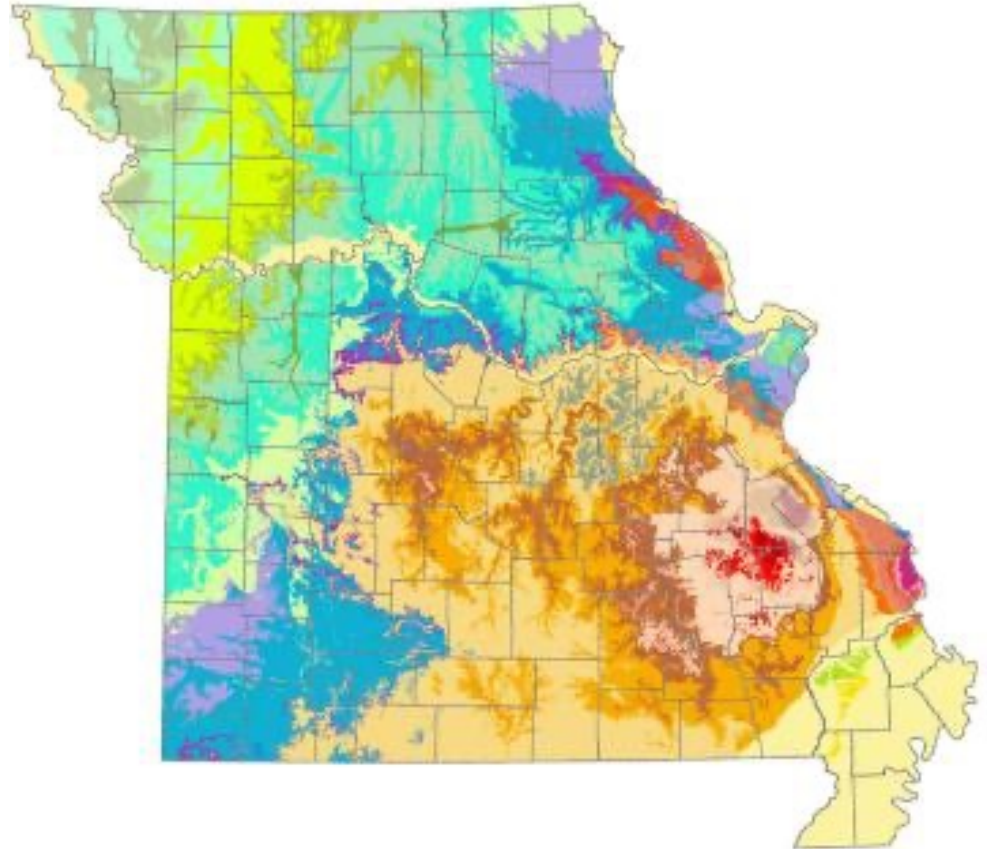


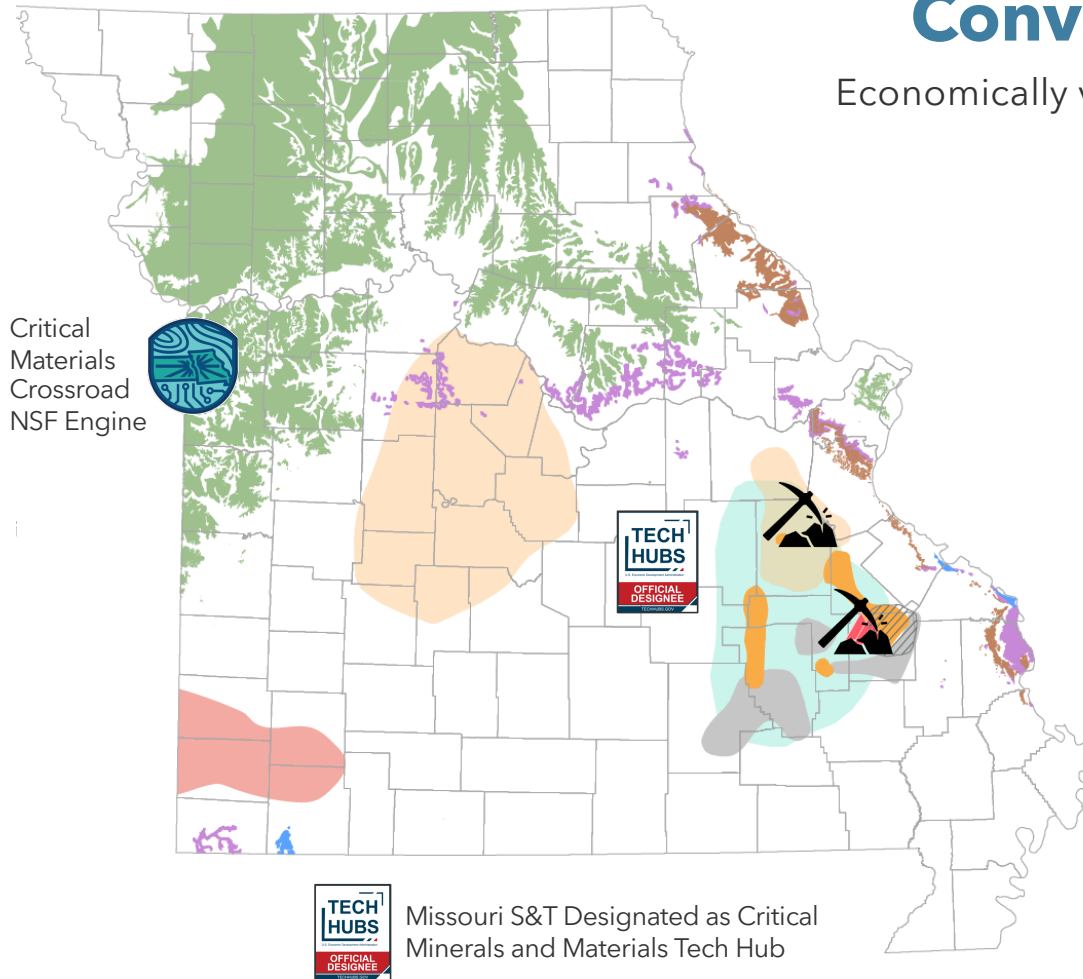
Empowering Critical Minerals Supply Chains in Missouri

Justin Sherwood
State Energy Office
Division of Energy
justin.sherwood@dnr.mo.gov



Conventional CM Reserves

Economically viable reserves for **36 of 60** critical minerals.



Cobalt

Largest known reserve in N. America

Lead

Top global producer in 19th/20th centuries.

Gallium & Germanium

Subject to Chinese export ban and controls

Heavy Rare Earths

Pea Ridge Mine

Viable reserves of terbium, dysprosium, ytterbium, & others



State Energy Offices - Opportunities to Provide Immediate Support

1. Assert Situational Leadership

- Current lack of focused coordination is a major barrier to meaningful deployment

2. De-Risking Upstream and Midstream in the Supply Chain

- Funding Pre-Competitive Exploration
- Expand Scopes of Energy and Innovation Funds

3. Resolve '*Administrative*' Barriers

- Legacy Sites
- Permitting New Sites

